

**The importance of meadow orchards in Southern Germany**  
**„The meadow fruit concept in Baden Württemberg“**

**Veitshöchheim/Würzburg**  
**AREPO annual plenary meeting 202**  
**27 October 2022**

**Bruno Krieglstein**



**Baden-Württemberg**

MINISTERIUM FÜR ERNÄHRUNG, LÄNDLICHEN RAUM  
UND VERBRAUCHERSCHUTZ

# Association Swabian MeadowFruit



Quelle: Wiesenobst e.V.

Guiding principle Living tradition:  
Not looking in the ashes, but passing on the embers  
(passion) to the next generation.

# Swabian MeadowFruit

The swabian of the medieval dynasty of the Hohenstaufen



Quelle: Wiesenobst e.V.

# Swabian MeadowFruit - Fact sheet

## Goals

- preservation of traditional extensive management,
- strong growing rootstocks,
- preservation of regional fruit varieties and biodiversity,
- maintenance of landscape and habitat,
- added value for producers and processors;
- promote and spread regenerative agriculture,
- preserving, conserving and passing on knowledge,
- next objective: Registration as traditional speciality guaranteed (TSG) "Wiesenobst".



Quelle: Wiesenobst e.V.

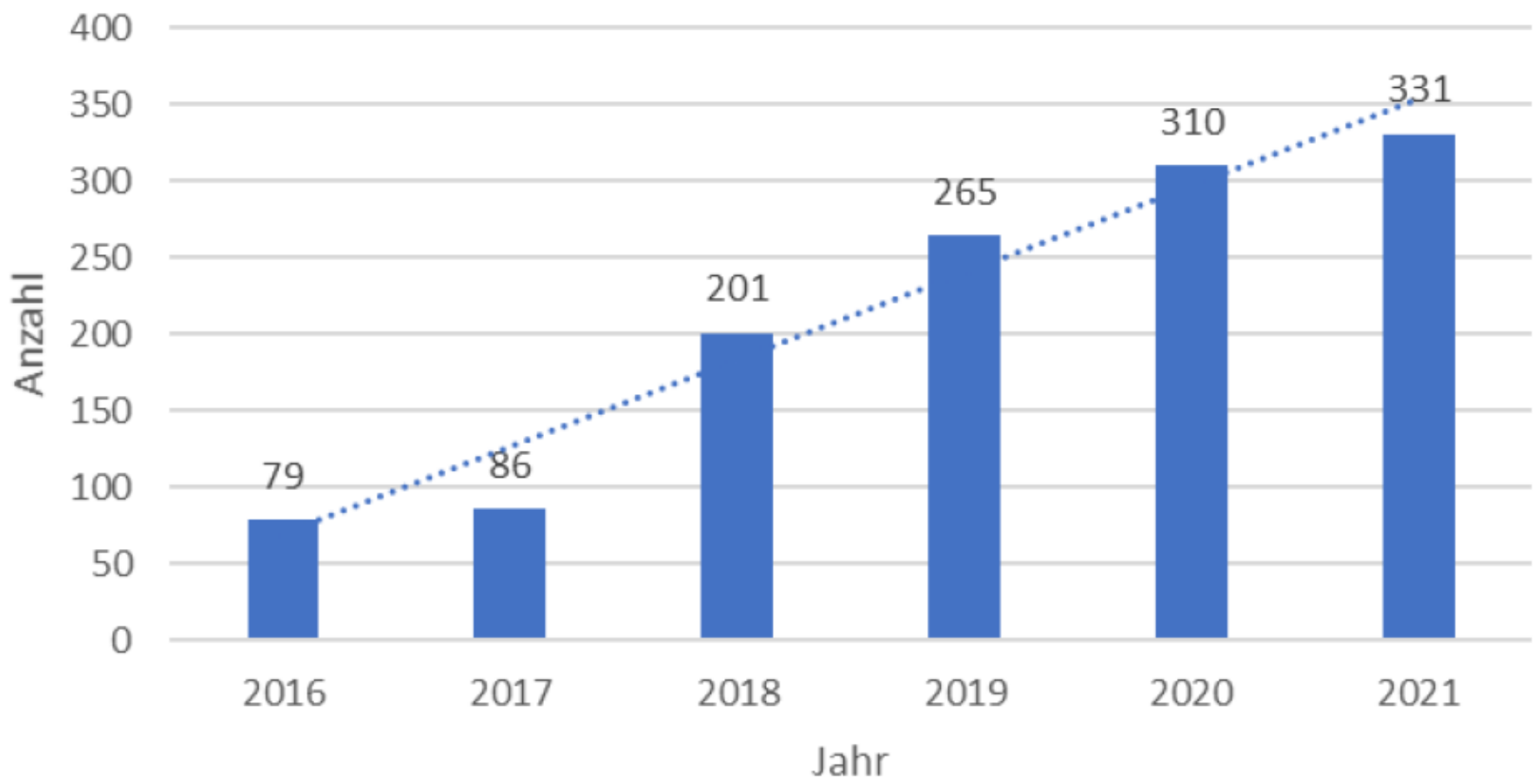


Baden-Württemberg

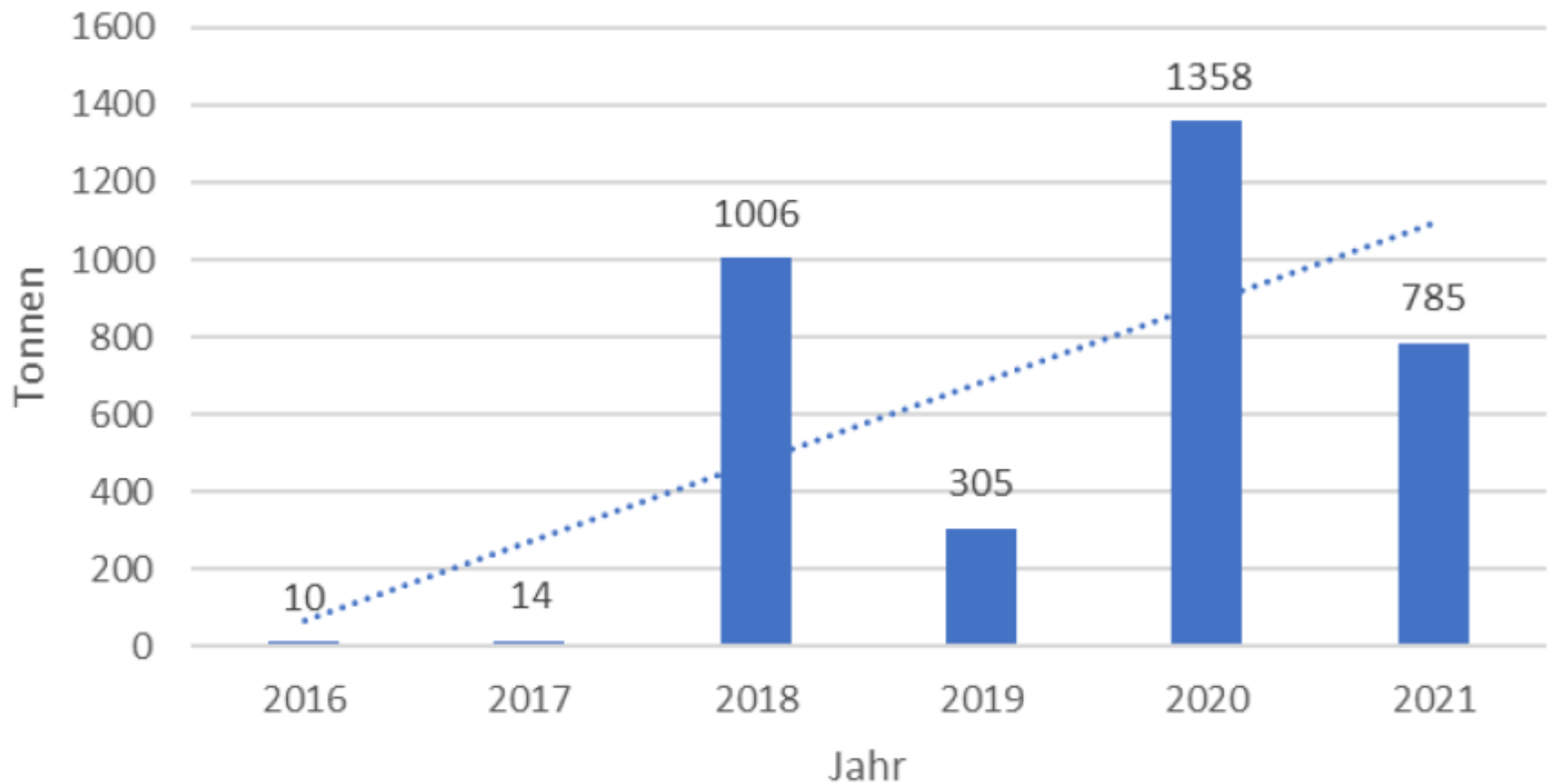
MINISTERIUM FÜR ERNÄHRUNG, LÄNDLICHEN RAUM  
UND VERBRAUCHERSCHUTZ

# Swabian MeadowFruit

## current number of members



## Delivered quantities in tons



# Swabian MeadowFruit

Requirement for production (process quality)

with two categories of criteria:

1. Core criteria
2. Bonus criteria



Quelle: Wiesenobst e.V.



Baden-Württemberg

MINISTERIUM FÜR ERNÄHRUNG, LÄNDLICHEN RAUM  
UND VERBRAUCHERSCHUTZ

# Swabian MeadowFruit

## Core criteria - obligatory for all areas:

90% strong-growing rootstocks

Max. 155 trees/ha for stands over 20 years old

Glyphosate prohibited

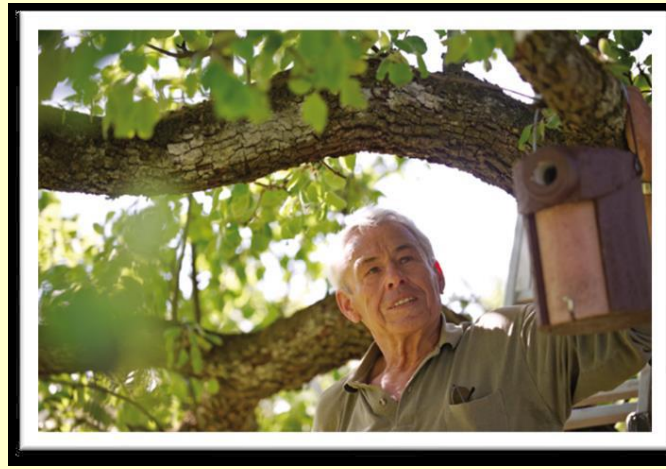
Fertilization allowed (because necessary)

Soil analysis obligatory for all new plots - repeat every 5 years

In addition to the core criteria **bonus criteria** must be met

based on a list of 6 different criteria to select

Selection suitable for the area and individual



Quelle: Wiesenobst e.V.



Baden-Württemberg

MINISTERIUM FÜR ERNÄHRUNG, LÄNDLICHEN RAUM  
UND VERBRAUCHERSCHUTZ



# Swabian MeadowFruit

## Digital solution for documentenation and checks

online input form

Fläche 615 bearbeiten

[zurück](#)

**1. Schritt: Informationen zur Fläche**

[2. Schritt: Kernkriterien](#)

[3. Schritt: Bonuskriterien](#)

dort gelangen Sie zum Video ['Wie lege Ich eine neue](#)



Gemeinde\*

Göppingen

Gemarkung\*

Faundau

Flurstücksnummer\*

615

Flurstücksnummer  
(Subnummer)

1

Flurstücksname\*

Hasenholde

Flurstücksgröße\*

ha

0

ar

25

qm

0

# Swabian MeadowFruit

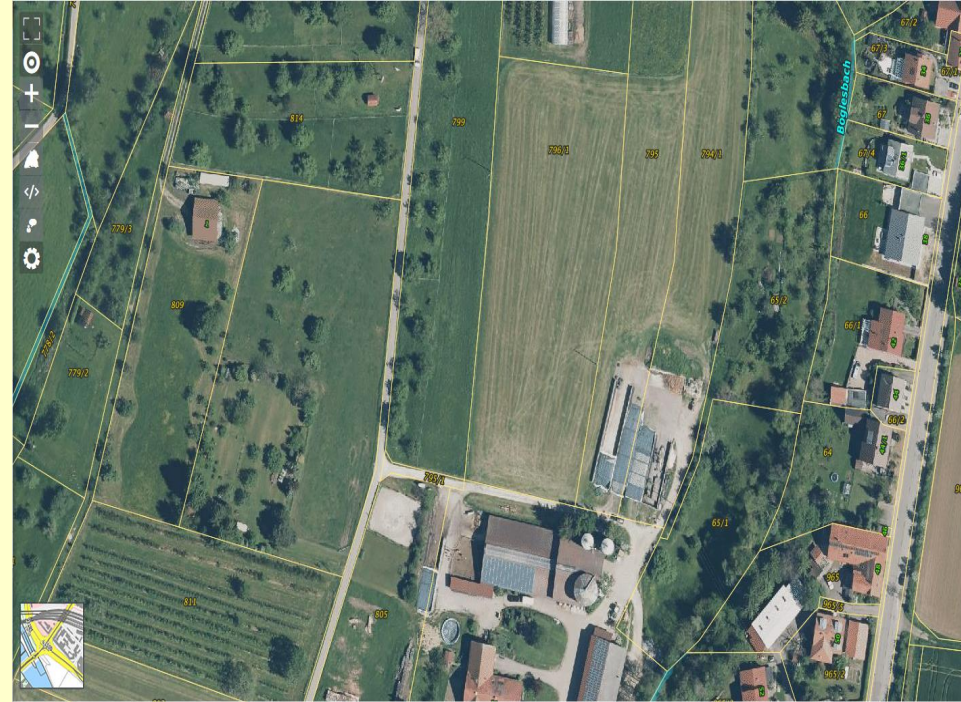
Information to each plot of land (MeadowFruit-plot) only digital :

Number of the plot of land

Number and age of trees incl.

Fruit varieties

Measures concerning:  
meadow management  
(biological) production



Quelle: LGL BW

Controls to verify compliance to the producers requirements



Baden-Württemberg

MINISTERIUM FÜR ERNÄHRUNG, LÄNDLICHEN RAUM  
UND VERBRAUCHERSCHUTZ

# Swabian MeadowFruit

## Variety of processed products



Baden-Württemberg

MINISTERIUM FÜR ERNÄHRUNG, LÄNDLICHEN RAUM UND VERBRAUCHERSCHUTZ

# WiesenObst (MeadowFruit)

Quelle: Wiesenobst e.V.



Thank you for your attention!